

TILE ADHESIVES and GROUTS

Tile Adhesives

Sate Fix N

Cement base tile adhesive.

Application Area

- Used for indoor and outdoor application, for walls and floors
- Bonding tiles and ceramics.
- White and grey color.

Properties

- Easy to apply
- High bonding strength
- Non slip

Consumption

- 3-4 kg/m²

Delivery

- 25 kg paper bag



Sate Fix ST

Plastic modified, hydraulically setting thin and medium bed adhesive.

Application Area

- Used for bonding marble, granite, stoneware wall and floor.
- For indoor and outdoor application.

Properties

- Resistant to heat and water
- White and grey color
- Non slip

Consumption

- 3 - 4 kg/m²

Delivery

- 25 kg paper bag



Sate Fix Flex

Highly flexible, cement base tile adhesive.

Application Area

- For laying numerous wall and floor covers indoors and outdoors, in dry and wet areas, for balconies, terraces, heated screeds and swimming pools

Properties

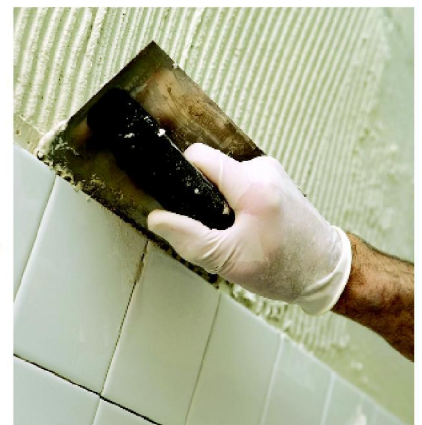
- Resistant to heat and water
- White and grey color
- Non slip

Consumption

- 1,6 - 3,2 kg/m² (Depending on cover)

Delivery

- 25 kg paper bag



Sate Ready Fix

Emulsion base, ready mix tile and mosaic adhesive.

Application Area

- Used for indoor and outdoor application for walls and floors.
- Bonding marble, granite, glass mosaic.

Properties

- Ready to use
- Easy to apply and fast dry
- Non slip

Consumption

- 3 - 4 kg/m²

Delivery

- 20 kg plastic bucket



Tile Grouts

Sate Fuge N

Joint mortar (up to 6 mm width).

Application Area

- Used for indoor and outdoor application, for walls and floors

Properties

- White, grey and 8 different colors
- Easy to apply

Consumption

- 0.4 - 0.6 kg/m²

Delivery

- 25 kg paper bag



TILE ADHESIVES and GROUTS

Tile Grouts

Sate Fuge Flex

Cement base, flexible joint mortar.

Application Area

- For pointing wall covers made of tiles and slabs, floor clinker tiles, cast stone indoors and outdoors in dry and wet areas subjected to temperature changes e.g. on balconies, terraces, facades and swimming pools
- For joints 4 - 15 mm wide

Properties

- White, grey and 8 different colors
- Used for indoor and outdoor applications
- Resistant to heat and water

Consumption

- 0.4 - 0.6 kg/m² depending on joint width

Delivery

- 20 kg paper bag



Sate Fuge Pox

Two component epoxy base, ready to use tile grout.

Application Area

- Used for indoor and outdoor application
- For bonding special tiles, mosaics for swimming pool, laboratories, hospitals, waste water treatments.

Properties

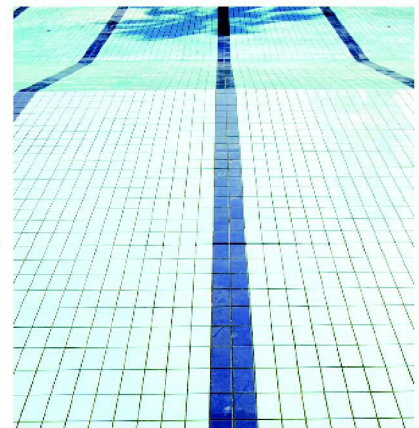
- It is resistant to heat, chemicals and temperature changes
- White and grey color.

Consumption

- 0.4 - 0.7 kg/m² depending on joint width

Delivery

- 5 kg set



CONCRETE PROTECTION and REPAIR MORTARS

Satex RM5

Cement based, thin, repair mortar.

Application Area

- It is used for filling and levelling walls and ceiling surface and plasters
- For indoor and outdoor applications

Properties

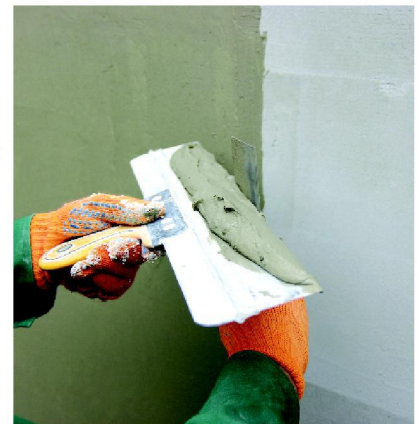
- Very good adhesion
- No shrinkage and cracking
- Very easy to work

Consumption

- 1,9 kg/m² per 1 mm thickness

Delivery

- 25 kg paper bag



Satex RM20

Cement base, thick, repair mortar.

Application Area

- It is used on prefabricated concrete units, bricks for filling concrete cavities, repairing render and restoration of old buildings
- For indoor and outdoor applications

Properties

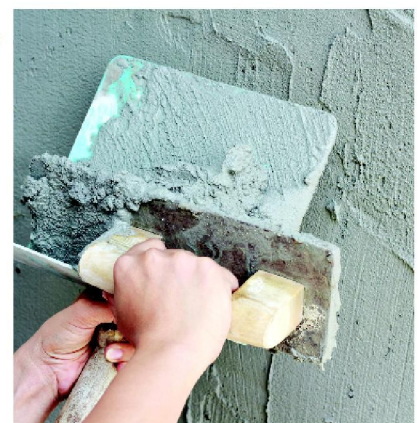
- Very good adhesion
- No shrinkage and cracking
- Resistant to weather conditions

Application Rate

- 2,0 kg/m² per 1 mm thickness

Delivery

- 25 kg paper bag



Satex RM St

Polymer modified, fiber reinforced structural repair mortar

Application Area

- Used for structural concrete repairs of all types of reinforced concrete structure (columns, beams and floors)
- Filling of tie-rod and carrot holes

Properties

- No primer needed
- Can be applied all concrete surfaces
- Resistant to against chlorine, sulphates and oil
- Shrinkage compensated
- Resistant to weather conditions

Application Rate

- 2,0 kg/m² per mm thickness

Delivery

- 25 kg paper bag

CONCRETE PROTECTION and REPAIR MORTARS

Satex RMF

Cementitious surface filler, felled render.

Application Area

- It is suitable for smoothing restoration renders
- It is used to produce fine, closed-pore render surfaces that are ready for painting

Properties

- Very high adhesion capacity
- To create very smooth surface without texture
- Easy to work

Consumption

- Approximately 1,50 kg/m² per mm thick layer

Delivery

- 25 kg paper bag



Satex D Spachtel

Water impermeable, fillet and levelling special mortar.

Application Area

- Mainly used for filling fillets and wall corners for concrete slab and basement walls.
- For interior and exterior areas.
- Interior and exterior applications.

Properties

- Water impermeable.
- Shrinkage compensated.
- Quick setting.
- Easy and simple application.

Consumption

- 1,85 kg per mm thickness.

Delivery

- 25 kg paper bag



Satex PCC Grund

One component, cementitious steel primer and bonding slurry

Application Area

- A part of PCC system repairing building elements.

Product Specifications

- Provides long term corrosion protection to steel reinforcement
- Component of the PCC concrete repair system
- Mixed with only water

Consumption

- 1,5 kg/m² as primer
- 2,0 kg/m² as bonding slurry

Delivery

- 25 kg paper bag



Satex RM Fix

Fast setting cement.

Application Area

- It is used for sealing leakages in basements, pits shaft etc. and anchorings
- Mixing with sand and using as repair mortar

Properties

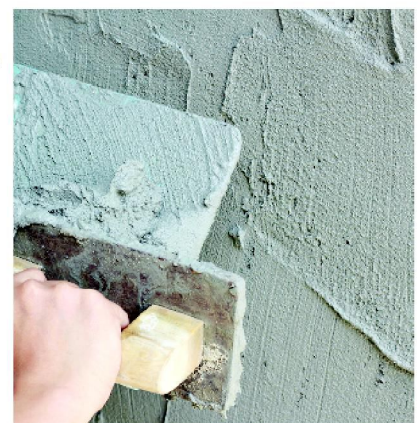
- Very high strength early and final stage
- No formation of efflorescence
- Waterproof

Consumption

- Varies

Delivery

- 15 kg plastic bucket



Sate Pox INJ

Two component, epoxy base, solvent free, low viscosity injection resin

Application Area

- Used for injection into cementitious based substrates.
- For pouring cracks and hollow areas in concrete.

Properties

- Low viscosity
- Two component
- Resistant to chemicals
- Very good bonding

Consumption

- 1,05 kg/lt

Delivery

- 5 kg tin

CONCRETE PROTECTION and REPAIR MORTARS

Sate Pox RM

Two component thixotropic, solvent free epoxy repair mortar.

Application Area

- Used for general purposes
- Ideal for bonding, repairing works

Properties

- Excellent bonding to concrete and steel
- High load bearing
- Easy to use and apply

Consumption

- 1,70 kg/m²

Delivery

- 5 kg set



Satex VM

Non-shrink grout.

Application Area

- For pouring anchors, machines, piers tracks and other steel constructions as well as for filling recesses in pre fab cellar elements.

Properties

- Very high early and final strength.
- High flowable.
- Free from shrinkage.

Consumption

- 2,00 kg/ltr cavity volume

Delivery

- 25 kg paper bag



JOINT SEALANTS

Satex ACR

High quality, plastic joint sealing compound on an acrylic base.

Application Area

- For connecting joints, expansion joints with light loads and shear cracks.
- For sealing windows and doors to the building for repairing facades and restoration cracks
- For indoor and outdoor

Properties

- Very high bonding
- Competable for painting
- Easy to apply
- Grey and white colors

Consumption

- According to joint size

Delivery

- 310 ml



Satex PU

Elastic, one component, polyurethane base joint sealant.

Application Area

- Used inside and outside, roofs, terraces, PVC and aluminium facade claddings

Properties

- Very high bonding
- Resistant to UV and weathering
- Easy to apply
- UV and chemical resistant
- Grey, white and black colors

Consumption

- According to joint size

Delivery

- 600 ml



Satex SLN

Elastic jointing and sealing compound on a silicone rubber base.

Application Area

- Silicone for universal use in construction
- Wet and sanitary areas

Properties

- Very high bonding
- Resistant to UV and weathering

Consumption

- According to joint size

Delivery

- 310 ml - Cartridge
- 600 ml

JOINT SEALANTS

Satex PS/PSF

Elastic, two component joint sealants base on polysulphide.

Application Area

- Expansion joint sealant for concrete slabs, precasts
- Horizontal joints in car parks, storage, shipyards, runaway

Properties

- Resistant to jet fuel, hydraulic fluids and many chemicals
- Continuously flexible
- Resistant to UV and weathering

Consumption

- 1,6 kg/cm³

Delivery

- 4 kg set



WATERPROOFINGS

Satex B1 K

One component, bitum base, crack bridging, semi liquid waterproofing

Application Area

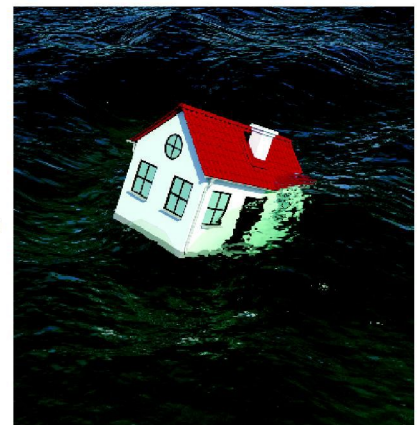
- Waterproofing for all load cases on cementitious substrates for basement
- For intermediate waterproofing on balconies and in damp room
- For civil engineering, shafts etc,

Consumption

- Depending on surface and water pressure 1,0 kg/m² for 1 mm wet thickness.

Delivery

- 30 kg plastic bucket



Satex B2K

Two component, bitum base, crack bridging, semi liquid waterproofing

Application Area

- Safety waterproofing in cellar areas
- Against water pressure
- For new construction, restoration and as intermediate coating beneath screeds
- For civil engineering, shafts, clarification plants, tunnels etc.

Consumption

- 1,06 kg/m² depending on surface and water pressure for 1 mm wet thickness

Delivery

- 30 kg set plastic bucket



Satex BLatex

One component, bitum latex base, without solvent, crack bridging coating.

Application Area

- For waterproofing against ground damp and non standing seepage water for coating civil engineering, shafts and pipes

Consumption

- 0,6 kg/m² each coat, depending on load one or two coat

Delivery

- 30 kg plastic bucket

Satex DS

One component, cement base, hydraulically setting, with high performance waterproofing slurry.

Application Area

- For waterproofing surfaces on buildings, interior and exterior
- In construction, civil engineering and hydraulic engineering against water pressure, moisture and ground damp
- For preventive waterproofing in cellars, tanks, underground garages etc.
- Suitable for drinking water

Consumption

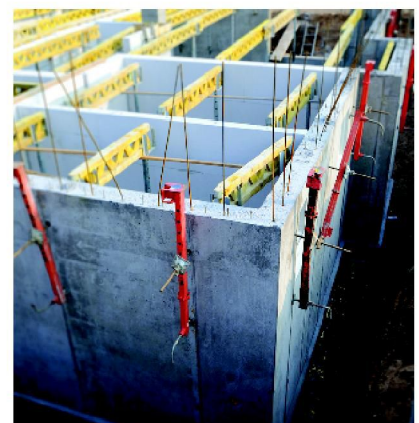
- 1,60 kg/m² per coat depending on surface and water pressure

Properties

- Vapour permeable
- Water pressure tight
- High strength and highly resistant surface waterproofing

Delivery

- 25 kg paper bag



WATERPROOFINGS

Satex DSS

One component, cement base, high quality, sulfate resistant waterproofing slurry for indoors and outdoors.

Application Area

- For subsequent cellar waterproofing from the interior against ground damp, non standing or standing seepage water, water pressure and water acting from behind
- Provides additional deep waterproofing protection and protect against masonry salts

Properties

- Water pressure tight
- Extremely high resistance to sulphate
- Very good adhesion to the substrate and bonding

Consumption

- 1,60 kg/m² per coat depending on surface and water pressure

Delivery

- 25 kg paper bag



Satex Flex 2K

Two component, cement base, crack bridging, water impermeable, flexible waterproofing slurry.

Application Area

- Flexible slurry for protection reservoirs and sewers in water and sewage areas, indoors and outdoors
- Good for swimming pools and water tanks

Properties

- Bridges movements and shrinkage cracks in the substrate
- Packaged ready to use with two components
- Flexible

Consumption

- 1,60 kg/m² for 1 mm thickness depending on surface and water pressure

Delivery

- 22.5 + 7.5 kg set (Powder + Liquid)



Satex Flex 2KS

Two component, cement base, flexible waterproofing slurry.

Application Area

- Used for waterproofing cellars of building and for wet areas, balconies and kitchens.

Properties

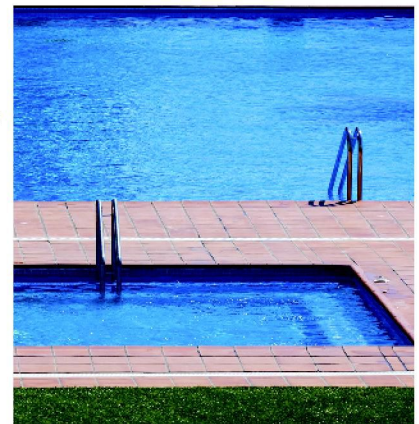
- Packaged ready to use with two components.

Consumption

- 1,50 kg/m² per 1 mm thickness depending on surface

Delivery

- 20.0 + 5.0 kg set (Powder + Liquid)



Satex Ultra Flex 2K

Two component, cement base, high performance flexible for crack bridging, waterproofing slurry.

Application Area

- Used for waterproofing cellar slabs, swimming pools, concrete garage roofs, balconies
- Flexible slurry for waterproofing in a bond with ceramic tiles indoor and outdoor areas

Properties

- Bridge movements and shrinkage cracks in the substrate
- Two component package ready to use
- Good adhesion, water impermeable

Consumption

- 3,0 kg/m² for moisture
- 3,7 kg/m² for water pressure

Delivery

- 20.0 + 5.0 kg set (Powder + Liquid)



Satex Crystallin

Cement base crystallin waterproofing

Application Area

- Used for waterproofing of concrete surface from negative and positive directions
- Suitable for tunnels, subways, water reservoirs, concrete walls and floors

Properties

- Increase the durability of concrete and stop water penetration
- Non harmful for drinking water tank
- Gives crystallin deeply effect

Consumption

- 0,8 kg/m² per coat

Delivery

- 20.0 kg

WATERPROOFINGS

Satex F Folie

One component, acrylic base, elastic, brushable waterproofing for indoors areas.

Application Area

- For wet and damp room waterproofing in indoor areas in a band with tiles on walls and floors e.g. in baths, showers, kitchens in residential buildings
- For moisture sensitive, absorbent substrates (gypsum render, gypsum plaster board, fibrous plaster sheets) and cementitious, absorbent substrates (concrete, screed, cement render etc).

Properties

- For seamless and jointless surface waterproofing under ceramic covers
- Crack bridging and excellent working properties

Consumption

- Approximately 1,50 kg/m² and a 1 mm thick layer in 2 coats

Delivery

- 7, 20 kg plastic bucket



Satex PU Folie

One component, polyurathane base, elastic, UV resistant waterproofing compound

Application Area

- Very good bonding on mineral surface, metal and wood
- Waterproofing for terrace, balcony and roofs.

Properties

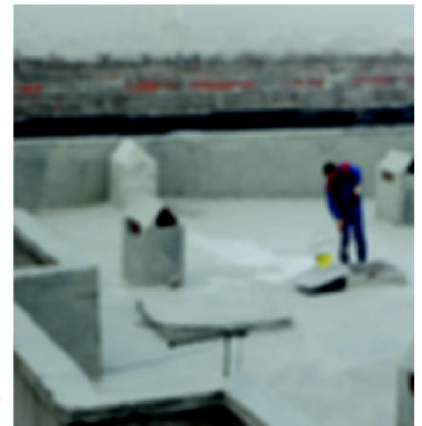
- Resistant to UV and atmosphere gases
- Flexible, very good performance for bridge cracks
- Applied quickly and easily
- Grey and white color

Consumption

- 1 kg/m² layer - at least 2 layers

Delivery

- 25 kg can



Satex D Folie

One component, acrylic base, flexible, UV resistant membrane

Application Area

- Used for all kind of non traffic roofs (metal, mineral base, old bitum)
- Waterproofing for balconies, terraces and roofs

Properties

- Good bonding all surfaces
- Easy to apply
- Grey color

Consumption

- 1,6 kg/m² 1 mm wet thickness

Delivery

- 25 kg can



Satex B Dach

One component, plastic modified bitum base, for roof UV resistant

Application Area

- Used for protective and waterproofing coat for the roofs

Properties

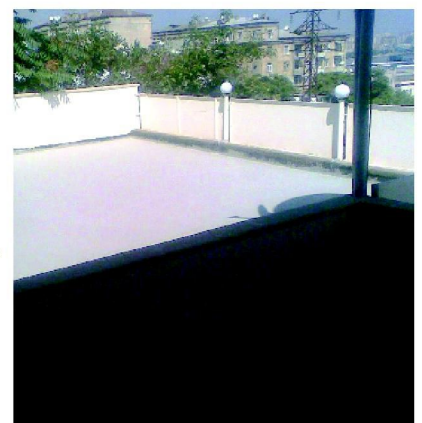
- Good bonding on mineral surface and bituminous felt
- Resistant to UV and atmosphere gases
- Easy to apply

Consumption

- 1,6 kg/m² 1 mm thickness

Delivery

- 20 kg can



Sate Band 120 mm

120 mm wide rubber polypilen based, elastic sealing type for waterproofing building and expansion joints

Application Area

- It is used with Satex FFolie for wet areas.

Delivery

- 50 m/Roll

WATERPROOFINGS

Sate Band B200/B300

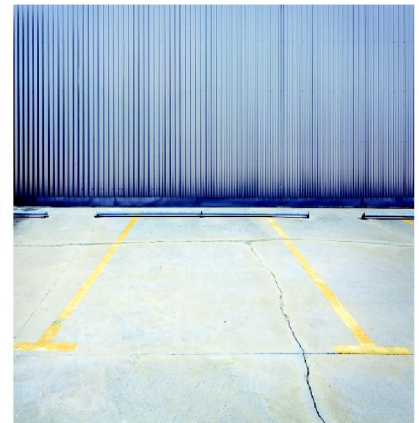
Flexible joint tape

Application Area

- For waterproofing joints in buildings
- Band with bitumen or epoxy mortar

Consumption

- 50 m/Roll



Satex RH

Extremely high setting waterproofing special mortar

Application Area

- It sets in 20 seconds to seal against moisture and ingress under pressure
- For quickly sealing water running and leaking areas

Consumption

- 1,9 kg/lt

Properties

- Reacts immediately with water at normal temperatures
- Water impermeable
- Shrinkage compensated

Delivery

- 15 kg plastic bucket



Sate PUR INJ

One component, polyurethane injection resin

Application Area

- Used for sealing against active water ingres as well as wet crack in concrete and masonry

Consumption

- 1.1 kg/lt in the space

Properties

- Moisture reaction
- Very good penetration
- Solvent free

Delivery

- 10 kg tin



GENERAL CONSTRUCTION PRODUCTS

Satex Multi

Highly effective, easily sprayable, universal release agent.

Application Area

- Universal use for absorbent and non-absorbent form work, wood, metal and plastic
- It is used on polywood, steel, wood formwork

Consumption

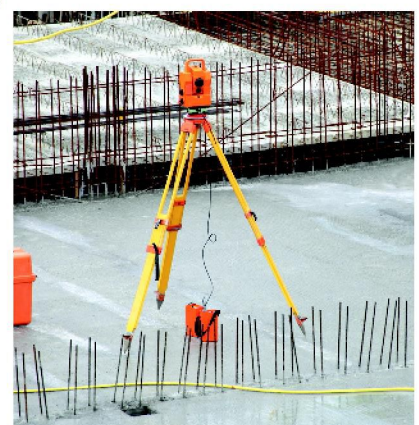
- 30 - 50 lt/m²

Properties

- It does not leave stains or marks on cement surface
- Easy application
- Keeps the formwork to be cleaned easily and extends its life

Delivery

- 30 lt



Satex Cure WX

Parafine base, liquid curing compound for preventing water loss in concrete.

Application Area

- Sprayed on to newly laid concrete surfaces to form a thin film barrier against water loss
- Particularly usefull in large areas of exposed concrete, such as highways, runways, retaining walls, roofdecks

Consumption

- 0,15 - 0,25 kg/m²

Properties

- Ready to use, simple to apply
- Solvent free
- White color

Delivery

- 30 kg and 210 kg

GENERAL CONSTRUCTION PRODUCTS

Satex Cure AC

Acrylic emulsion based curing compound for concrete and screed

Application Area

- It is used on all dry shales screed surfaces
- For road and floor screed

Properties

- High performance
- Solvent free
- Easy to apply, sprayable

Consumption

- 100 - 200 gr/m²

Delivery

- 30 kg plastic drum



Satex G Primer

Special primer for gypsum plaster.

Application Area

- Used as a primer to provide a high level of adhesion film on to fair faced concrete to make gypsum plaster

Properties

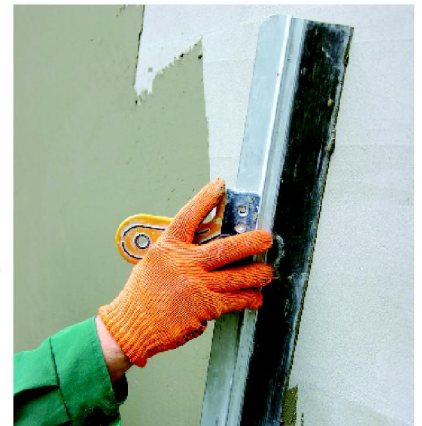
- High adhesion capacity
- Increases roughness
- Coarsely filled

Consumption

- 0,2 kg/m²

Delivery

- 15 kg plastic bucket



Sate Latex

Latex base bonding emulsion for general purpose

Application Area

- It is used for all kind of render, mortar production and repair mortars in order to increase the bonding and make waterproofing

Properties

- It increases workability and adhesion
- Gives better performances

Consumption

- 1:4 dilute with water

Delivery

- 30 kg plastic drum



Sate Binder

Acrylic base screed and mortar additive

Application Area

- It is used for all kind of additive for screed and mortar to get better performance

Properties

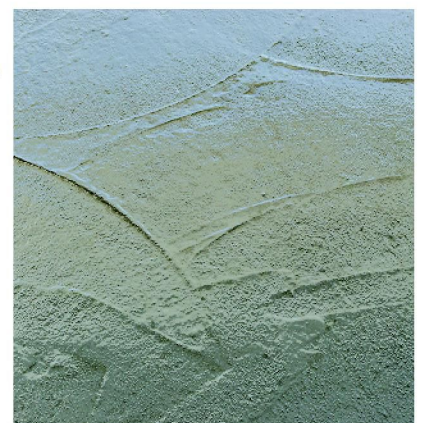
- It increases workability and bonding of screed and mortar
- Gives better performances

Consumption

- 1:3-5 dilute with water

Delivery

- 30 kg plastic drum



Sate TFGrund

Special primer with waterproofing and strengthening effect

Application Area

- Used for primer cement base waterproofing coat
- Provides additional deep waterproofing protection for masonry walls

Properties

- Increase the strengths of the substrate
- Support to waterproofing system
- Easy to apply

Consumption

- Approximately 0.20-0.60 kg/m² as per coat

Delivery

- 5, 30 kg plastic drum

SATEX THERMO SYSTEM

Sate B Fix

Plastic modified, cement base, term insulation board special adhesive mortar

Application Area

- Special adhesive for bonding heat insulation panels such as polystyrene, extrude polystyrene panels
- A part of Satex Thermo System

Properties

- Long time available for bonding
- High bonding quality
- Very easy application

Consumption

- Bonding as spots approximately 4,0 - 5,0 kg/m²

Delivery

- 25 kg paper bag



Satex B Plus

Plastic modified, hydraulically setting special plaster for heat insulation panels

Application Area

- Special plaster for coating on heat insulation panels such as polystyrene, extrude polystyrene panels
- A part of Satex Thermo System

Properties

- Resistance to weathering water, heat and frost after hardening
- Very long time available for improving
- Very low self stress

Consumption

- 4,0 - 5,0 kg/m²
- 1,6 kg/m² per mm thickness

Delivery

- 25 kg paper bag



Satex Deco Putz

High performance, medium coarse cementitious finish decorative render.

Application Area

- Suitable for use as a finishing render over Satex Thermo System
- Applied internally or externally in layer of thickness of 2 - 3 mm.

Properties

- White color
- Very long time available for improving
- Resistant to weathering and UV

Consumption

- 2,5 - 4,5 kg/m²

Delivery

- 25 kg paper bag



SatePox WBP 150

Two component water base epoxy primer

Application Area

- It is used as a bonding layer between old coating and for non absorbent mineral based surfaces
- Used as a primer for SatePox WBI60

Properties

- Excellent adhesion to many substrate
- No solvent containing
- Easy and quick apply

Consumption

- 0,15-0,20 kg/m²

Delivery

- 20 kg set



SatePox WB 160

High quality, two component water base epoxy color

Application Area

- It is used both in floor and wall areas
- Excellent coating for car parks and industrial areas, hospitals, laboratuvars, show rooms

Properties

- Resistant to mechanical and chemical loads
- Abrasion resistant
- Easy and quick apply

Consumption

- As a sealing 0,20-0,25 kg/m²

Delivery

- 20 kg set



SatePox PR 10

Transparent, two component solvent free epoxy resin primer

Application Area

- It is used as impregnation, primer, bonding layer
- For the production of compression resistant mortars, flow covers

Properties

- Good penetration capacity
- Solvent free, low odor

Consumption

- For priming 0,30-0,50 kg/m²
- For levelling 1:1 mixed with 01/03 quatrz sand 0,85 kg/m² resin + 0,85 kg/m² sand

Delivery

- 25 kg set



SatePox TC 120

Colored, solvent free, two component epoxy coating

Application Area

- It can be used as a coating
- It is used in industrial and commercial floor coatings, warehouse, services, workshops, showrooms, hospitals
- Multi use paint or thick coating

Properties

- Resistant to acids, chemicals, mineral oils, numerous alcalies and acids
- High compressive and flexural strengths
- Resistant to abrasion

Consumption

- Paint = 300 - 500 gr/m²

Delivery

- 20 kg set



SatePox TC 120 Str

Thixotropic, colored, solvent free, two component epoxy coating

Application Area

- Excellent coating for car parks
- It can be used a textured coating over a color primer or intermediate layer

Properties

- Resistant to mechanical and abrasion
- Non slip and good finish

Consumption

- Approximately 0,50 - 0,60 kg/m²

Delivery

- 20 kg set

Flooring Systems

Sate Pur 40 IND

Colored, solvent free, two component coating on a polyurethane resin base.

Application Area

- For surfaces subjected to mechanical loads and vehicle traffic
- Used as a flow coating on concrete and cement screed, load bearing indoor poured asphalt surfaces as well as metal substrates
- Excellent coating for car park, industrial areas, showrooms, services

Properties

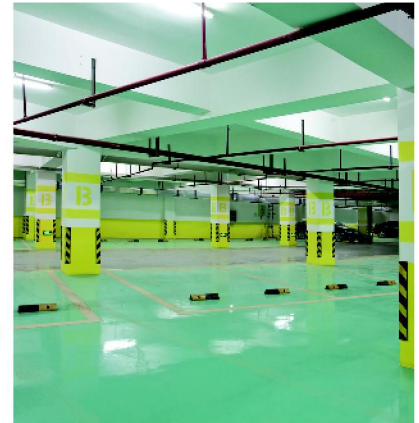
- Resistant to chemical and mechanical loads
- Crack bridging

Consumption

- 1,50 kg/m² per mm thick layer

Delivery

- 20 kg set



SatePox Color AS

Conductive, colored, epoxy resin coating

Application Area

- It is used horizontal transverse conductive layer in conductive coating systems
- Especially for electronic rooms and factories, computers room

Properties

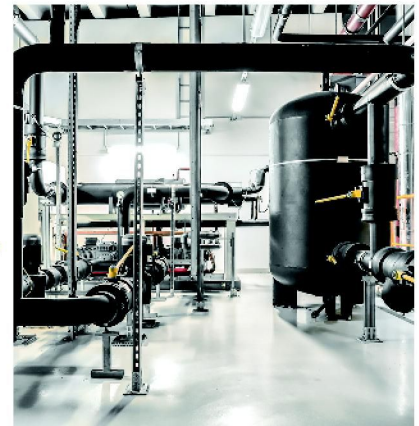
- Resistant to wear and mechanical loads
- Anti-static

Consumption

- Primer 0,2 kg/m²
- Coating 1,2 kg/m²

Delivery

- 20 kg set



Sate Plan10

Cement base, self levelling compound up to 10 mm

Application Area

- For the levelling applications under carpet, parquet, linolium and PVC surfaces
- Used indoor only

Properties

- Self level, easy to apply
- Fast setting
- Can be pumped

Consumption

- 1,60 kg/m² 1 mm thickness

Delivery

- 25 kg bag



Sate Plan20

Cement base, self levelling compound up to 20 mm

Application Area

- For the levelling floors under floor coatings or coverings

Properties

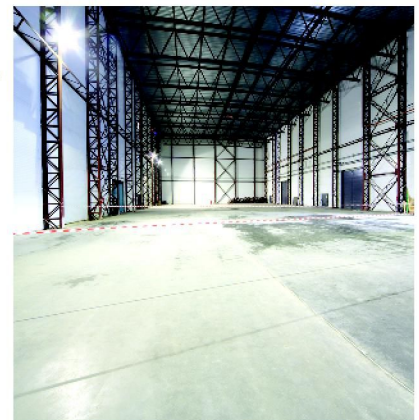
- Self level, easy to apply
- Very low inherent stress, hardens crack free, good adhesive bonding
- Fast setting

Consumption

- 1,60 kg/m² 1 mm thickness

Delivery

- 25 kg paper bag



Satex SH1

Liquid surface hardener for concrete and screed

Application Area

- It is used for consolidation fresh concrete and screed
- For warehouses, car parking and industrial areas floors

Properties

- Increase resistant to abrasion
- Reduces the absorption of water and salts that cause the harm

Consumption

- 200 - 500 kg/m²

Delivery

- 30 kg plastic drum

Satex Top200

Metal aggregate base shake on surface hardener

Application Area

- It is used in storage spaces, production halls, work shops, garages, cellars

Properties

- It contents only metal (non cast) aggregates

Consumption

- 4 - 6 kg/m²

Delivery

- 25 kg paper bag



Satex Top150

Ready mixed korundum base shake on surface hardener

Application Area

- It is used in storage spaces, production halls, work shops, garages, cellars

Properties

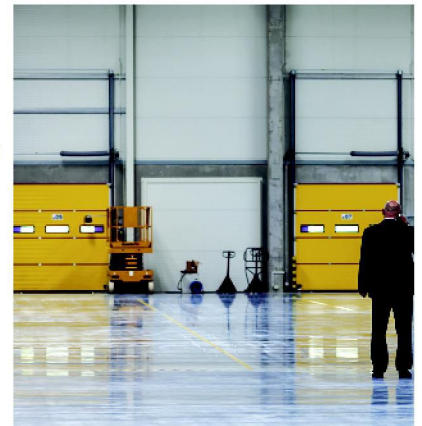
- It contents only korundum aggregates
- Precaution of abrasion against heavy mechanical loads
- Grey, red and green

Consumption

- 4 - 6 kg/m²

Delivery

- 25 kg paper bag



Satex Top100

Korundum and quartz aggregated base shake on surface hardener

Application Area

- It is used in storage spaces, production halls, work shops, garages, cellars

Properties

- It contents mixed of korundum and quartz aggregates
- Grey, red and green

Consumption

- 4 - 6 kg/m²

Delivery

- 25 kg paper bag



Satex Top50Q

Quartz aggregated base shake on surface hardener

Application Area

- It is used in storage spaces, production halls, work shops, garages, cellars

Properties

- It contents only quartz aggregate
- Grey, red and green

Consumption

- 4 - 6 kg/m²

Delivery

- 25 kg paper bag



Restoration Systems

SATEXLIME

Satex HL

Hydraulic lime.

Application Area

- For the restoration of heritage, as a binding material preparing of historic mortars and renders

Consumption

- Depends on using method

Delivery

- 15 kg paper bag

Satex HRM

Cement free, mineral based ready to use mortar.

Application Area

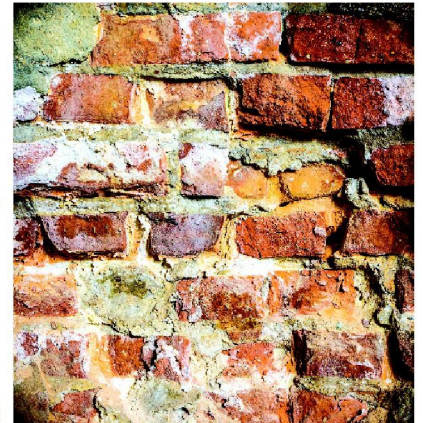
- For repairing of the loose parts on the facade

Consumption

- Approximately 1,4 kg/lt cavity volume

Delivery

- 15 kg paper bag



Satex L INJ

Cement free, hydraulic lime based injection mortar.

Application Area

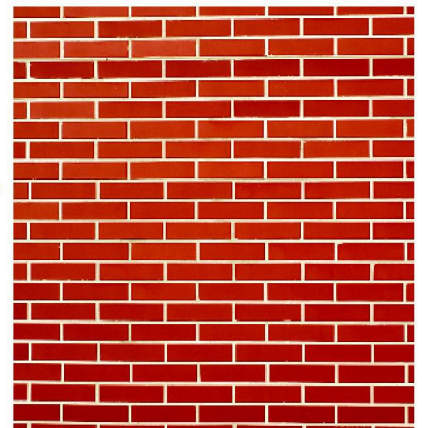
- It is used for the restoration of old hollow and loose masonry, render repairs

Consumption

- Approximately 1,4 kg/lt cavity volume

Delivery

- 20 kg paper bag



FACADE PROTECTION

Satex SL

Special impregnation agent for lime stoen. Hydrophobizing impregnation agent on alkylaloxo siloxane / silane

Application Area

- For all types of natural stone, particularly variations of limestone

Consumption

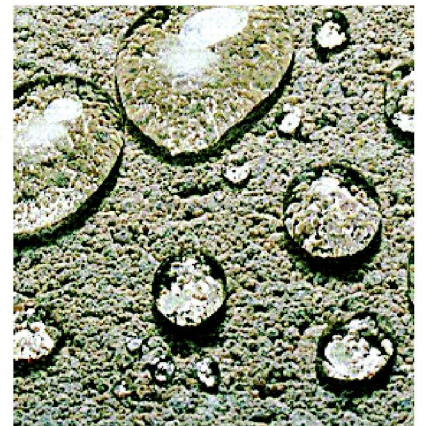
- Natural stone, fine pored 0,2-0,5 lt/m²
- Natural stone coarse pored 0,4-1,5 lt/m²

Properties

- High penetration capacity
- UV light and weather resistant
- Water vapour diffusion open

Delivery

- 5, 15 lt tin



Satex S

Transparent, water repellent impregnating agent based on low molecular siloxane

Application Area

- For hydrophobizing impregnation of porous, cementitious building materials such as brick, clinker, fair-faced sand-lime brick masonry, cementitious renders, fibrated cement, aerated concrete, light-weight concrete and modular concrete blocks

Consumption

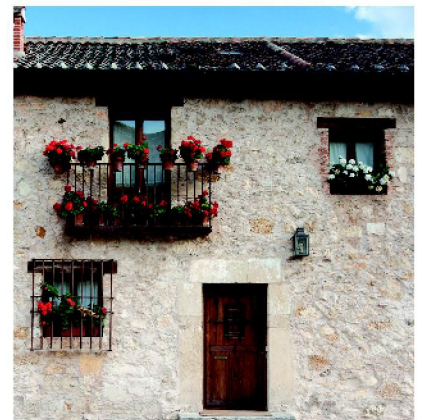
- Brick masonry 0,8 - 1,0 lt/m²
- Sand-lime brick 0,5 - 0,7 lt/m²
- Render 0,5 lt/m²
- Aerated concrete 1,0 lt/m²
- Fibrated cement 0,3 lt/m²
- Modular concrete blocks 1,2 lt/m²

Properties

- UV light and weather resistant
- Water vapour diffusion open
- Excellent long term protection

Delivery

- 5, 15 lt tin



FACADE PROTECTION

Satex SW

Water based, hydrophobizing impregnation agent for porous, cementitious building materials on an alkylalkoxy silane base in emulsion form.

Application Area

- For hydrophobizing treatment of porous, cementitious building materials such as sand lime brick, natural stone, fair-faced brick masonry work, cementitious renders, aerated and light-weight concrete

Properties

- Solvent free and odourless
- UV light and weather resistant
- Good long term effect
- Water repelling

Consumption

- | | |
|-------------------------|-----------------------------|
| • Sand-lime brick | 0,5 - 0,7 lt/m ² |
| • Fair-faced brick | 0,8 lt/m ² |
| • Brick | 1,5 lt/m ² |
| • Aerated concrete | 1,3 lt/m ² |
| • Light-weight concrete | 1,0 lt/m ² |
| • Natural stone | 0,8 - 1,5 lt/m ² |

Delivery

- 5, 15 lt tin



FACADE COLOR / PAINT

Satex Farbe SL

Silicon based exterior facade paint

Application Area

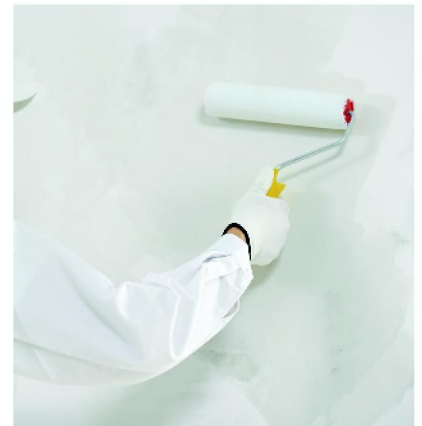
- Used as exterior finishing coat over mineral based surfaces
- Used for coloring and protection of the surfaces that are completed with thermal insulation and thin rendered

Properties

- Solid and long term
- Water repellent
- Water vapour permeability
- Resistant to abrasion, friction and pollution
- Does not discolor
- Resistant to rain
- It has plastic consistency, easy to apply

Delivery

- 20 kg plastic bucket



Admixture Systems

NORMAL PLASTICIZERS

Satex BV10

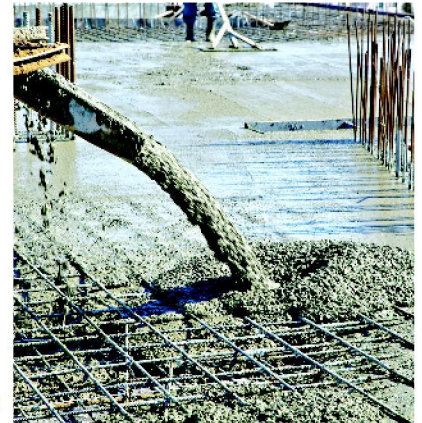
Water reducing / Plasticizer Admixture (ASTM C494 Type A, TS-EN 934-2)

Chemical Base : Modified polymer and gluconate	Chloride Content % (EN 480-10) : < 0,1
Color : Brown	Density : 1,09 ± 0,02 g/cm ³

Satex BV20

Water reducing / Set Retarding Admixture (ASTM C494 Type A, TS-EN 934-2 Table 10)

Chemical Base : Modified lignosulphonate	Chloride Content % (EN 480-10) : < 0,1
Color : Brown	Density : 1,19 ± 0,05 g/cm ³



MIDRANGE PLASTICIZER ADMIXTURES

Satex MR75

High range water reducing / Mid Range Plasticizer Admixture (ASTM C494 Type A, TS-EN 934-2)

Chemical Base : Modified lignosulphonate	Chloride Content % (EN 480-10) : < 0,1
Color : Brown	Density : 1,20 ± 0,03 g/cm ³

Satex MR100

High range water reducing / Mid Range Plasticizer Admixture (ASTM C494 Type A, TS-EN 934-2)

Chemical Base : Modified lignosulphonate	Chloride Content % (EN 480-10) : < 0,1
Color : Brown	Density : 1,20 ± 0,03 g/cm ³



SUPER PLASTICIZERS

Satex FM100

High range water reducing / Set Retarding Superplasticizer Admixture (ASTM C494 Type G, TS-EN 934-2 Table 11.1 and 11.2)

Chemical Base : Polynaphthalene sulphonate	Chloride Content % (EN 480-10) : < 0,1
Color : Brown	Density : 1,19 ± 0,03 g/cm ³

Satex FM125

High range water reducing / Set Retarding Superplasticizer Admixture (ASTM C494 Type G, TS-EN 934-2 Table 11.1 and 11.2)

Chemical Base : Poly sulphane	Chloride Content % (EN 480-10) : < 0,1
Color : Brown	Density : 1,20 ± 0,03 g/cm ³

Satex FM150

High range water reducing / Superplasticizer Admixture (ASTM C494 Type F, TS-EN 934-2 Table 3.1 and 3.2)

Chemical Base : Naphthale sulphonate	Chloride Content % (EN 480-10) : < 0,1
Color : Brown	Density : 1,18 ± 0,03 g/cm ³



Admixture Systems

NEW GENERATION SUPER PLASTICIZERS

Satex Flow 500

High range water reducing / Set Retarding Superplasticizer Admixture
(ASTM C494 Type G, TS-EN 934-2 Table 11.1 and 11.2)

Chemical Base : Polycarboxilic Ether	Chloride Content % (EN 480-10) : < 0,1
Color : Light Brown	Density : 1,075 ± 0,02 g/cm ³

Satex Flow 600

High range water reducing / New Generation Plasticizer Admixture
(ASTM C494 Type F, TS-EN 934-2 Table 3.1 and 3.2)

Chemical Base : Polycarboxilic Ether	Chloride Content % (EN 480-10) : < 0,1
Color : Light Brown	Density : 1,07 ± 0,02 g/cm ³

Satex Flow 700

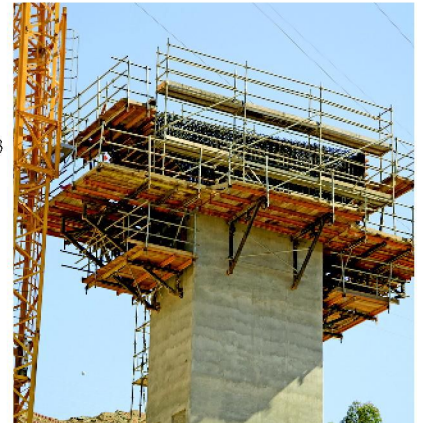
High range water reducing / New Generation Plasticizer Admixture that provides long time workability
(ASTM C494 Type F, TS-EN 934-2 Table 3.1 and 3.2)

Chemical Base : Polycarboxilic Ether	Chloride Content % (EN 480-10) : < 0,1
Color : Light Brown	Density : 1,05 ± 0,02 g/cm ³

Satex Flow 800

High range water reducing / New Generation Plasticizer Admixture that provides long time workability
(ASTM C494 Type F, TS-EN 934-2 Table 3.1 and 3.2)

Chemical Base : Polycarboxilic Ether	Chloride Content % (EN 480-10) : < 0,1
Color : Light Brown	Density : 1,10 ± 0,02 g/cm ³



WATERPROOFING ADMIXTURES

Satex 20(DM)

Waterproofing Admixture for concrete and mortar

Chemical Base : Modified water repellent
Color : White
Density : 1,09g/cm ³

Satex DMLQ

Impermeable water reducing plasticizer concrete admixture (ASTM C494 Type A, TS-EN 934-2 Table 9)

Chemical Base : Lignosulphonate and surface active materials	Chloride Content % (EN 480-10) : < 0,1
Color : Brown	Density : 1,07 ± 0,03 g/cm ³



SHOTCRETE ADMIXTURES

Satex Liquid SC

Sprayed concrete (shotcrete) admixture

Chemical Base : Aluminum sulphate	Chloride Content % (EN 480-10) : < 0,1
Color : Light Yellow	Density : 1,41 ± 0,03 g/cm ³

Satex Powder SC

High performance powder accelerator for dry mix sprayed concrete

Chemical Base : Aluminate and some special powder	Chloride Content % (EN 480-10) : < 0,1
Color : Light Biege	Density : 1,00 ± 0,02 g/cm ³



SPECIAL CONCRETE ADDITIVES and COMPLEMENTARY PRODUCTS

Satex VZ

Concrete admixture for controlled set retardation and plaster admixture for workability
(ASTM C494 Type B, TS-EN 934-2)

Chemical Base : Pure phosphate
Color : Light Yellow
Density : $1,19 \pm 0,03 \text{ g/cm}^3$

Satex Redoz

High range water reducing and long time workability maintaining concrete admixture

Chemical Base : Polymer
Color : Light Brown
Chloride Content % (EN 480-10) : $< 0,1$
Density : $1,07 \pm 0,02 \text{ g/cm}^3$

